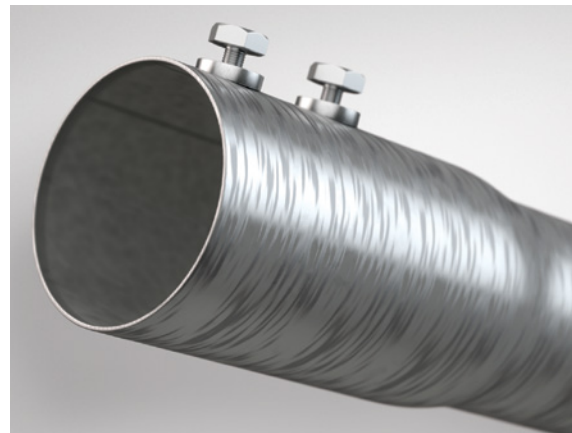


**WORK SMART.  
WORK WITH  
WHEATLAND.**  
Time-saving Electrical Products





TIME-SAVING ELECTRICAL PRODUCTS

# Save time and money on every job.

When you work in electrical contracting, there are lots of challenges on the job. Keeping long conduit runs as straight as possible. Working in tight spaces. And making connections quickly in order to meet short deadlines. That's why Wheatland Tube developed a line of electrical products that help you work smart – saving you time and money on installation while ensuring the long-term quality of the run.



For more information, call **800.257.8182** or visit **wheatland.com**

**3X FASTER!**

# SmartCompression™ EMT

WITH THE ONLY PRE-INSTALLED RAIN-TIGHT COUPLING

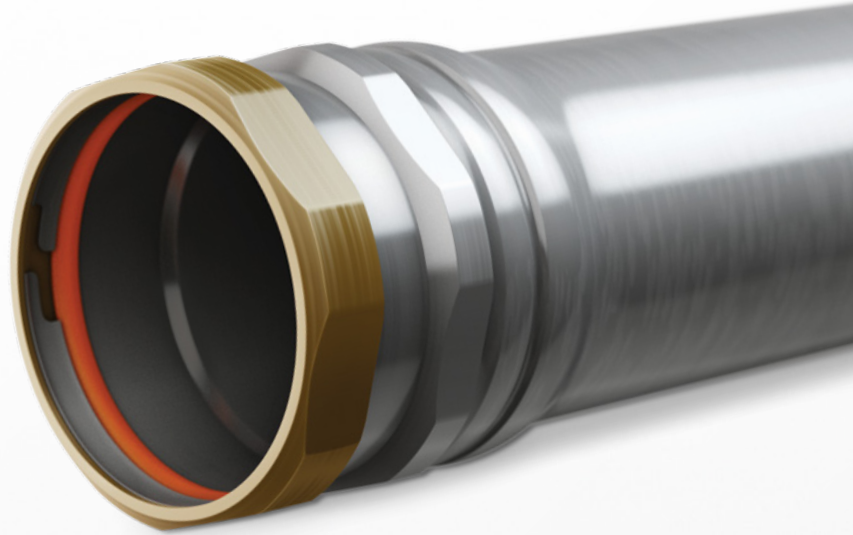
## Wet or Dry, You Win

For wet or dry applications where compression fittings are specified or preferred, choose SmartCompression EMT to get the job done faster. It's UL® Listed raintight and concrete tight!

- ✓ Coupling attached for 3x faster installation\*
- ✓ Proprietary ID coating for 20% faster wire pulling\*\*
- ✓ No fumbling with loose couplings

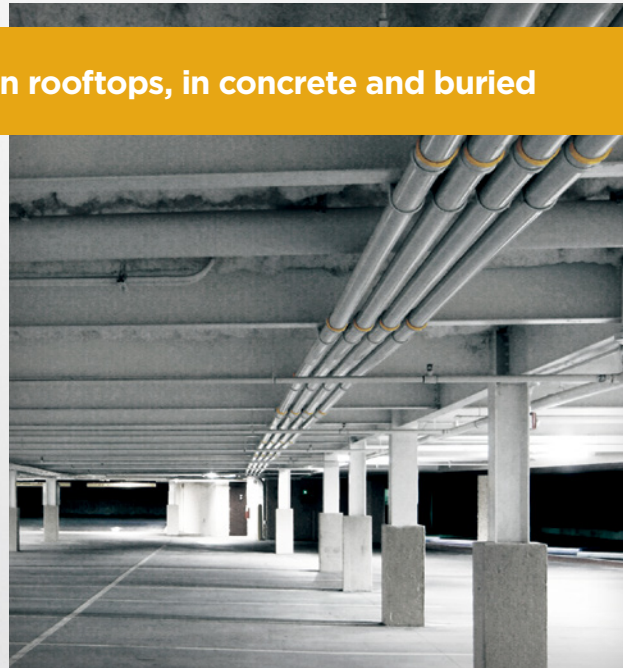
### Availability

Trade sizes 2-4  
10' & 20' lengths



\*Compared to standard compression coupling installations  
\*\*Compared to EMT with uncoated ID

**For use indoors and outdoors, in factories, on rooftops, in concrete and buried**



**3X FASTER!**

# SpeedCouple

PRE-INSTALLED SWIVEL COUPLING

## Fast and Flexible

When making connections with SpeedCouple, you can turn the pre-installed coupling instead of the conduit or elbow. Just align, turn and tighten.

- ✓ Coupling attached for up to 3x faster installation\*
- ✓ All-in-one design for up to 50% material cost savings\*\*
- ✓ Easy lead-in threads

### Availability



10' & 20' DuraGuard™ rigid and IMC products  
SpeedCouple rigid conduit and elbows in trade sizes 2-5  
SpeedCouple IMC conduit and elbows in trade sizes 2-4

\*Compared to traditional coupling installations for straight runs  
\*\*Compared to elbow installations with three-piece couplings



**For use anywhere rigid conduit or IMC is used**



**5X FASTER!**

# SmartSet™ EMT

WITH BUILT-IN SET SCREW COUPLING

## The Smart Way to Raceway<sup>SM</sup>

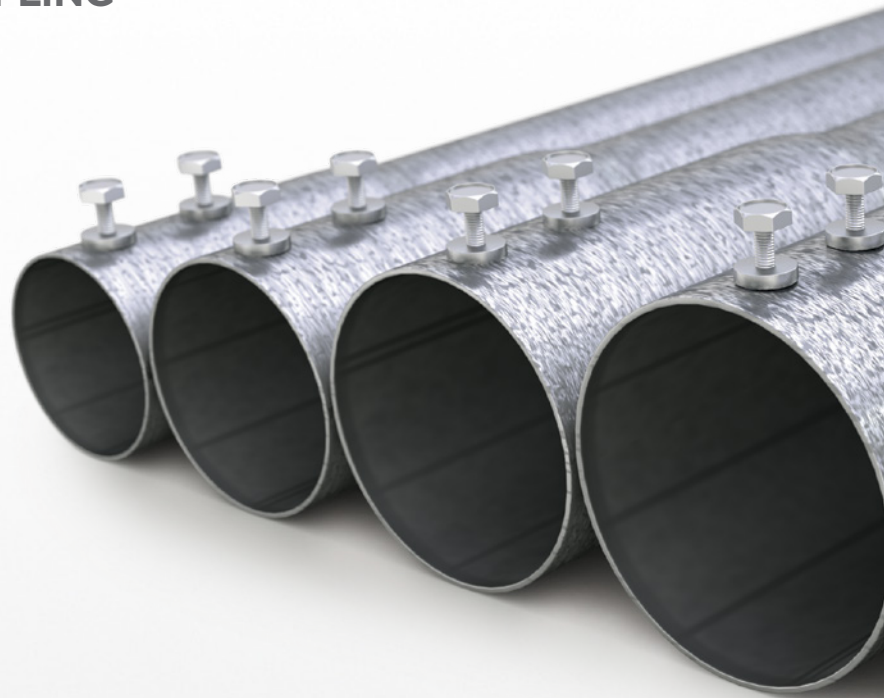
With SmartSet EMT, you don't have to purchase, inventory and install separate couplings. Every piece of SmartSet EMT comes with one built-in set screw coupling so you can work smarter, saving time and money on every job.

- ✓ Coupling built in for 5x faster installation\*
- ✓ No fumbling with couplings
- ✓ Ideal for prefabrication

### Availability

Trade sizes 1¼-4  
10' & 20' lengths  
9 vivid colors

*\*Compared to traditional coupling installations*



**For use in warehouses, arenas, health care and more**



**2X FASTER!**

# 20' Steel Conduit and EMT

## The Smart Choice for Long Runs

Wheatland Tube's exclusive 20' steel conduit comes with built-in savings. It lets you work faster and straighter than traditional 10' lengths.

- ✓ Double the length for 2x faster installation\*
- ✓ Half the couplings for 50% lower connection costs
- ✓ Straighter runs

### Availability

EMT trade sizes ½-4  
DuraGuard rigid trade sizes ½-6

*\*Compared to traditional 10' lengths*



For use in convention halls, manufacturing, energy facilities and more



**WORK FASTER!**

# Color Check™ Color-coded EMT

## Built-in Labeling for Critical Systems

Color Check EMT keeps everything in order during installation and takes the guesswork out of future maintenance. No need to paint or tape on the job – the work is already done for you.

- ✓ 9 vivid colors
- ✓ No painting or taping
- ✓ Easy circuit identification

### Availability

Trade sizes ½-4  
10' & 20' lengths



**Easily identify fire alarm, security, data and other critical circuits**





700 South Dock Street  
Sharon, PA 16146

800.257.8182  
info@wheatland.com  
wheatland.com



**Corporate Office**  
227 West Monroe Street  
Suite 2600  
Chicago, IL 60606

312.275.1600  
info@zekelman.com  
zekelman.com

### About Wheatland Tube Electrical Conduit and Fittings

Wheatland Tube produces a broad spectrum of steel electrical conduit, including intermediate metal conduit (IMC), electrical metallic tubing (EMT) and DuraGuard™ hot-dip galvanized steel rigid metal conduit. We also supply a full line of steel and aluminum elbows and nipples, steel couplings, and rigid aluminum conduit and couplings. Additionally, we now offer SpeedCouple, a factory-installed swivel coupling, and SmartSet™ EMT with integral set screw coupling.

For more information, contact Wheatland Tube at:

**800.257.8182** or **info@wheatland.com**

Or, visit our website at [wheatland.com](http://wheatland.com)

Follow us on:



[twitter.com/WheatlandTube](https://twitter.com/WheatlandTube)



[linkedin.com/company/zekelman-industries](https://linkedin.com/company/zekelman-industries)



[youtube.com/ZekelmanIndustries](https://youtube.com/ZekelmanIndustries)



[wheatland.com/blog](http://wheatland.com/blog)